

Building A Healthier Houston County



A Closer Look - February 2008

NORTHWEST BED TOWER (NWBT)

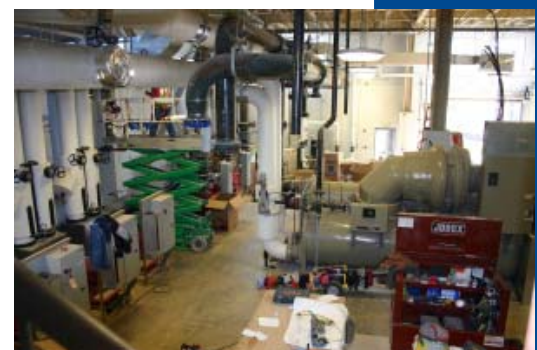
- ✘ Lower lobby/first floor overhead rough-in
- ✘ Second floor overhead rough-in
- ✘ Lower lobby, main lobby and 2nd floor interior framing
- ✘ Exterior skin
- ✘ Start masonry
- ✘ Fourth floor overhead rough-in

CENTRAL ENERGY PLANT (CEP)

- ✘ Energize equipment
- ✘ Scheduled mechanical/electrical shutdown and tie-ins
- ✘ Continue sitework/landscaping



(NWBT)



(CEP)

