

Building A Healthier Houston County



A Closer Look - November

NORTHWEST BED TOWER (NWBT)

- ✘ Fifth floor/roof elevated slabs
- ✘ Lower lobby mechanical overhead rough-in
- ✘ Backfill foundation walls

CENTRAL ENERGY PLANT (CEP)

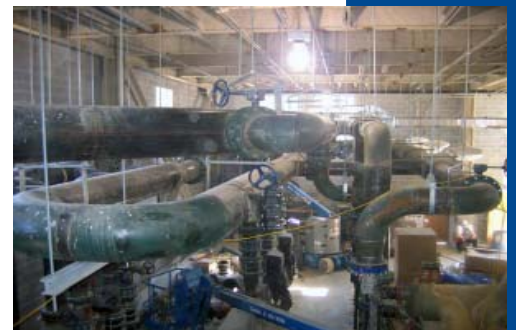
- ✘ Installation of major equipment
- ✘ Exterior brick and stucco
- ✘ Sitework/landscaping

PATIENT CARE ADDITION AT ER

- ✘ Construction complete - November 30th



(NWBT)



(CEP)

